

THE PROFESSIONAL

WELDED MESH FORMWORK SYSTEM

NOVOFORM

**THE FUTURE OF FOUNDATION
FORMWORK**

**DESIGNED
TESTED
PROVEN**



A USER FRIENDLY SOLUTION

Standard Novoform™ is manufactured using 4mm main wires at 6 inch centers on 3mm cross wires at 3 inch centers. Designed, tested and proven to suit foundations containing reinforcement of depths up to 108 inches.

Our mesh is produced from cold drawn mild steel, manufactured to US Standards. The mesh is electronically welded at every intersection.

Our dedicated team will ensure that you are given precise, custom instructions regarding the details and assembly of Novoform™ on every order placed.

PANEL SIZES

All panels are 8 ft long, and are available in the following depths:

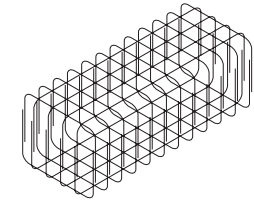
18 in	60 in
21 in	63 in
24 in	66 in
27 in	69 in
30 in	72 in
33 in	75 in
36 in	78 in
42 in	84 in
48 in	90 in
54 in	96 in
57 in	108 in



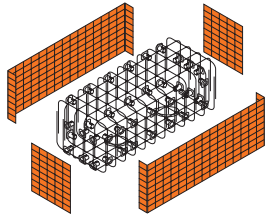
PILE CAP OR BASE ASSEMBLY – STEP BY STEP GUIDE

Cutting the Novoform™ pile cap panels allows easy access to fit reinforcement bars through the cap or base.

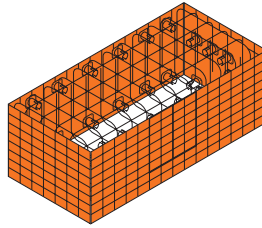
- 1** Position pile cap cage in trench to line and level.
- 2** Using the Novoform™ instructions provided with order, identify the marked panels for cap and base and place against the spacers.
- 3** Mark the panel outline on the side of the cap or base assembly, as drawn, ready to form opening connections.
- 4** Cut center line and bottom line. Form 'inverted T', fold out 'doors', ready to accept Novoform™ panels.
- 5** Select preformed Novoform™ panels and place inside the open 'doors'. Attach joint with wire tie.



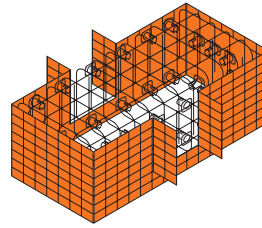
Pile cap area formed and leveled.



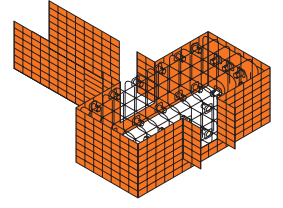
All Novoform™ panels marked per instructions, for simple and rapid assembly.



Use straight edge and marker to measure additional 1.0 inch width so panels fit inside 'doors'.

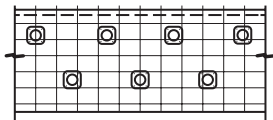
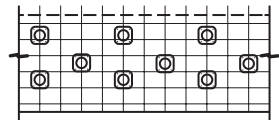


Leave top wire mesh intact and cut alternate wires at 'door' hinge line. This helps to give a tight fold and makes the folding easier. The 'doors' act as the grout seal. Spacers may be removed at door openings.

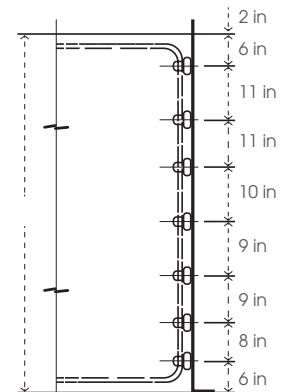
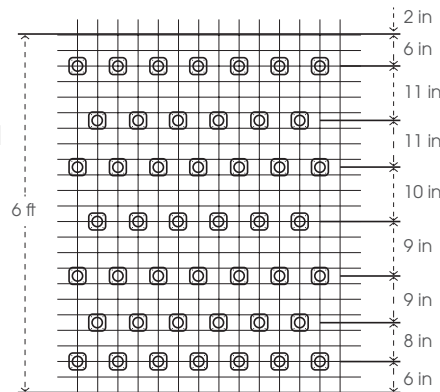


TYPICAL SPACER ARRANGEMENT

Will vary by depth of cap/base and ground conditions. Spacer centers to be adjusted as required to maintain specified concrete cover. Spacers to be staggered, as shown, where practical.



NovoForm™ recommendation: Maximum Novoform™ spacer centers 18 inches.



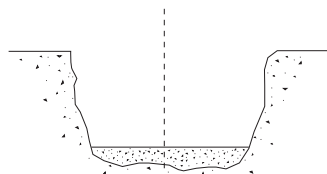
TYPICAL "U" SECTION CONNECTIONS

Will vary by depth of cap/base and ground conditions. Spacer centers to be adjusted as required to maintain specified concrete cover. Spacers to be staggered, as shown, where practical.

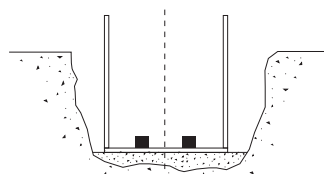
- EXTERNAL CORNER WITH PILE**
connect & tie
tie crosspiece
- PILE INTRUSION**
cut base locally
- EXTERNAL CORNER, NO PILE**
cut side and bend
tie crosspiece
- TYPICAL INTERSECTION**
cut side and fold
cut side and fold
- TYPICAL OVERLAP**
receiving panel
overlapping panel
nest panels 6 in min
cut end wires to allow spread

U SECTION INSTALLATION

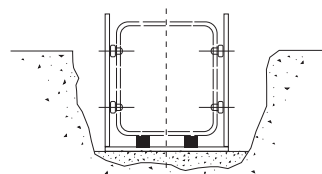
Recommended construction sequence for reinforced concrete ground beams.



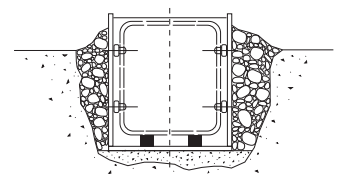
- 1** Excavate trench and form level base.



- 2** Position U section Novoform™ panel and place rebar chairs in base.



- 3** Insert rebar cage with fixed Novoform™ plastic side spacers to line and level.



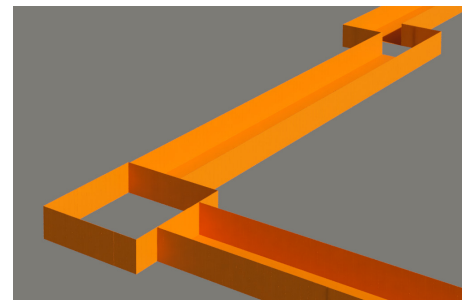
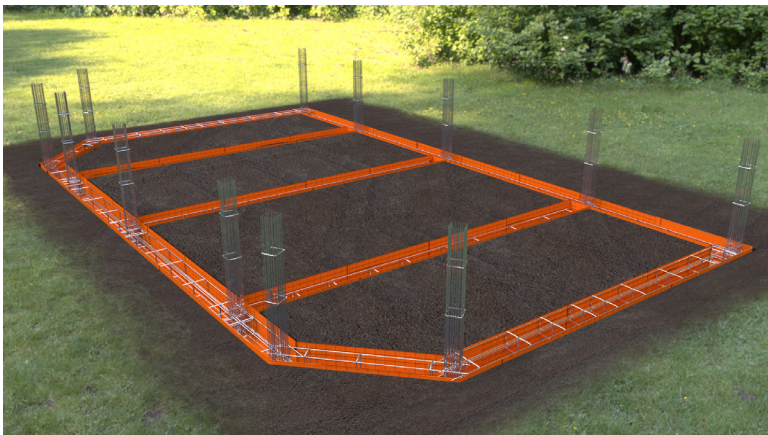
- 4** Place loose backfill within top 2 inches of finished concrete level. Keep foot traffic and vehicles well clear of foundations under construction.

- ✓ Novoform™ is manufactured in our **Grand Junction, CO and Fairmont, WV facilities.**
- ✓ **Large stock levels** ensure short lead times and tailor deliveries to meet site schedules.
- ✓ Purpose built machines and **skilled workforce ensure simplified installation** on site.
- ✓ Our in house design and take-off service ensures you **only purchase what you need.**
- ✓ Site drawings dispatched with **every order.**
- ✓ On-site support available from our **experienced sales team and manufacturing engineers.**



Models of every project are developed with Revit to streamline projects and orders.

**AUTODESK®
REVIT®**



Novoform is an IBC and IRC certified product through Intertek.

www.novoform.us

CODE
COMPLIANCE



Intertek
CCRR-0315

Schauenburg Flexadux Corp.
25 Rodeo Drive, Fairmont, WV 26554, USA
2233 Sanford Drive, Grand Junction, CO 81505, USA

T: (304) 363 0868 - West Virginia
T: (970) 245 9400 - Colorado
E: info@novoform.us